

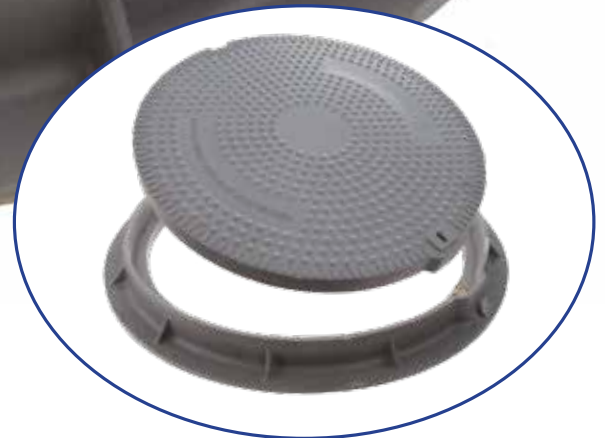
Lightweight Access Covers

COMPOSITE RESIN



LOCKABLE

450mm opening
600mm opening



PRODUCT CODE

AC1/450, AC1/600

PO Box 125
Cobbitty 2570
Ph: 1300 794 633
sales@nobisproducts.com.au

 **nobis**
products

Lightweight Access Covers Suitable for septic tanks and water tanks

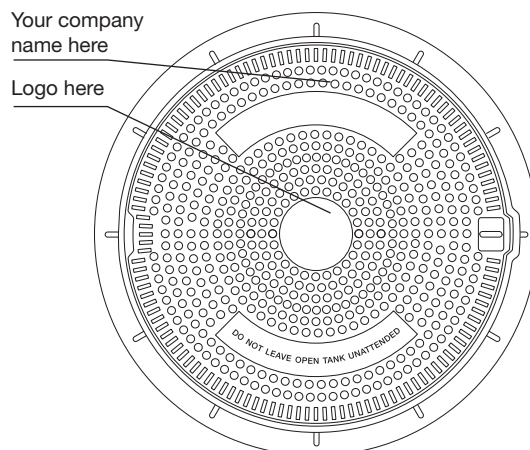
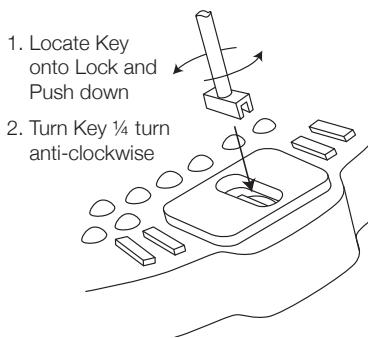


COMPOSITE RESIN

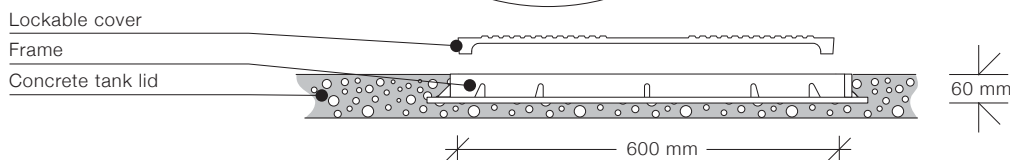
The Nobis lightweight access cover and frame can be cast into any concrete tank lid or screwed/ bolted to any plastic, steel or fibreglass tank. 600mm and 450mm diameter clear opening covers are available, each able to withstand a load of 1.5 tonnes or a force of 15kN. They are suitable for light traffic areas.

The covers and frames are made of a composite material of fibreglass and special resin that is moulded at high temperature and high pressure. The manufacturing process changes the molecular structure of the material to produce a very high strength light weight product.

Features	Benefits
450 cover weighs <5.0kgs withstands 1.5 tonnes 600 cover weighs <10kgs withstands 1.5 tonnes	Avoids any OH & S problems of lifting concrete or cast iron covers. On a weight for weight comparison they are stronger than steel.
Specifically made for septic tanks	Supports three times the requirement of AS/NZS1546.1:2008
Able to support a 1.5tonne load	The cover will deflect and then return to its original shape
Corrosion resistant	Cannot rust
Does not expand or contract with hot or cold weather	
Lockable	Prevents unauthorised access
Safety minded	'Do not leave open tank unattended' is moulded into cover
Unsealed	Allows tanks to ventilate
Can be customised	Company names and logos can be moulded on to the cover
Standard colour - grey	Matches concrete colour, other colours available



Will support 1.5 tonnes.



AC 1.1

PRODUCT CODE

AC1/450, AC1/600

CAT: NP AC1/450, AC1/600

PO Box 125
Cobbitty 2570
Ph: 1300 794 633
sales@nobisproducts.com.au

